

**PRODUCT MONOGRAPH**

<sup>Pr</sup>**APO-TERBINAFINE**

**(terbinafine hydrochloride)**

**250 mg terbinafine (as terbinafine hydrochloride) tablets**

**Antifungal Agent**

**APOTEX INC.  
150 Signet Drive  
Weston, Ontario  
M9L 1T9**

**DATE OF REVISION:  
October 29, 2013**

**Control Number: 166973**

## Table of Contents

<b>PART I: HEALTH PROFESSIONAL INFORMATION.....</b>	<b>3</b>
SUMMARY PRODUCT INFORMATION .....	3
INDICATIONS AND CLINICAL USE.....	3
CONTRAINDICATIONS .....	3
WARNINGS AND PRECAUTIONS.....	4
ADVERSE REACTIONS .....	7
DRUG INTERACTIONS .....	10
DOSAGE AND ADMINISTRATION .....	13
OVERDOSAGE .....	14
ACTION AND CLINICAL PHARMACOLOGY .....	14
STORAGE AND STABILITY.....	15
DOSAGE FORMS, COMPOSITION AND PACKAGING .....	15
<b>PART II: SCIENTIFIC INFORMATION .....</b>	<b>16</b>
PHARMACEUTICAL INFORMATION.....	16
CLINICAL TRIALS.....	17
DETAILED PHARMACOLOGY .....	20
TOXICOLOGY .....	23
REFERENCES .....	28
<b>PART III: CONSUMER INFORMATION.....</b>	<b>34</b>

<sup>Pr</sup>**APO-TERBINAFINE**  
(terbinafine hydrochloride)

**PART I: HEALTH PROFESSIONAL INFORMATION**

**SUMMARY PRODUCT INFORMATION**

<b>Route of Administration</b>	<b>Dosage Form / Strength</b>	<b>Clinically Relevant Non-medicinal Ingredients</b>
Oral	250 mg tablet	<i>Colloidal silicon dioxide, croscarmellose sodium, magnesium stearate and methylcellulose.</i> <i>For a complete listing see Dosage Forms, Composition and Packaging section.</i>

**INDICATIONS AND CLINICAL USE**

APO-TERBINAFINE (terbinafine hydrochloride) is indicated in the treatment of fungal infections of the skin and nails caused by dermatophytes such as *Trichophyton* (e.g. *T. rubrum*, *T. mentagrophytes*, *T. verrucosum*, *T. violaceum*), *Microsporum canis*, *Epidermophyton floccosum*.

APO-TERBINAFINE is indicated in the treatment of onychomycosis (fungal infection of the nail) caused by dermatophyte fungi.

Prior to initiating treatment with APO-TERBINAFINE tablets, appropriate nail or skin specimens should be obtained for laboratory testing (KOH preparation, fungal culture, or nail biopsy) in order to confirm the diagnosis of onychomycosis or dermatomycosis.

APO-TERBINAFINE may be considered for the treatment of severe tinea skin infections (tinea corporis, tinea cruris and tinea pedis) which have been unresponsive to topical treatment.

Note: Oral terbinafine is not effective in pityriasis versicolor.

**CONTRAINDICATIONS**

APO-TERBINAFINE (terbinafine hydrochloride) is contraindicated in patients with a known hypersensitivity to terbinafine or to any of the excipients of APO-TERBINAFINE or component of the container. (see **DOSAGE FORMS, COMPOSITION and PACKAGING**)

## WARNINGS AND PRECAUTIONS

### Serious Warnings and Precautions

Rare cases of liver failure, some leading to death or liver transplant, have occurred with the use of terbinafine tablets for the treatment of onychomycosis and dermatomycosis in individuals with and without pre-existing liver disease.

In the majority of liver cases reported in association with terbinafine use, the patients had serious underlying systemic conditions and an uncertain causal association with terbinafine. The severity of hepatic events and/or their outcome may be worse in patients with active or chronic liver disease. Treatment with APO-TERBINAFINE tablets should be discontinued if biochemical or clinical evidence of liver injury develops.

### Hepatic

Terbinafine tablets are not recommended for patients with chronic or active hepatic disease. Before prescribing APO-TERBINAFINE, liver function tests should be performed since hepatotoxicity may occur in patients with and without pre-existing liver disease. Therefore periodic monitoring (after 4-6 weeks of treatment) of liver function tests is recommended. APO-TERBINAFINE should be immediately discontinued in case of elevation of liver function test. Patients prescribed APO-TERBINAFINE tablets should be warned to report immediately to their physician any symptoms of persistent nausea, anorexia, fatigue, vomiting, right upper abdominal pain or jaundice, dark urine or pale feces. Patients with these symptoms should discontinue taking oral terbinafine, and the patient's hepatic function should be immediately evaluated.

### Renal

The pharmacokinetics of terbinafine have been investigated in patients with renal impairment (creatinine clearance  $\leq 50$  mL/ min); based on this study the use of terbinafine in renally impaired patients is not recommended (see **CLINICAL PHARMACOLOGY, Pharmacokinetics**).

### Metabolism

*In vitro* and *in vivo* studies have shown that terbinafine inhibits the CYP2D6 metabolism. Therefore, patients receiving concomitant treatment with drugs predominantly metabolized by this enzyme, e.g. certain members of the following drug classes, tricyclic antidepressants (TCAs),  $\beta$ -blockers, selective serotonin reuptake inhibitors (SSRIs), antiarrhythmics class 1A, 1B and 1C and monoamine oxidase inhibitors (MAO-Is) Type B, should be followed up, if the co-administered drug has a narrow therapeutic window (see **DRUG INTERACTIONS**).

## **Skin**

Serious skin reactions (e.g. Stevens-Johnson syndrome, toxic epidermal necrolysis, drug rash with eosinophilia and systemic symptoms) have been very rarely reported in patients taking terbinafine tablets. If progressive skin rash occurs, treatment with APO-TERBINAFINE tablets should be discontinued.

Terbinafine should be used with caution in patients with pre-existing psoriasis or lupus erythematosus as precipitation and exacerbation of psoriasis and cutaneous and systemic lupus erythematosus have been reported in a postmarketing setting.

## **Ophthalmologic**

Changes in the ocular lens and retina have been reported following the use of terbinafine tablets in controlled trials. The changes noted were non-specific and the significance of these changes is unknown.

## **Immune**

Transient decreases in absolute lymphocyte counts (ALC) have been observed in controlled clinical trials. The clinical significance of this observation is unknown. However, in patients with known or suspected immunodeficiency, physicians should consider monitoring complete blood counts in individuals using APO-TERBINAFINE therapy for greater than six weeks.

Lupus erythematosus:

During post-marketing experience, precipitation and exacerbation of cutaneous and systemic lupus erythematosus have been reported infrequently in patients taking terbinafine. APO-TERBINAFINE therapy should be discontinued in patients with clinical signs and symptoms suggestive of lupus erythematosus.

## **Hematologic**

Very rare cases of blood dyscrasias (neutropenia, agranulocytosis, thrombocytopenia, pancytopenia) have been reported in patients treated with terbinafine tablets. Etiology of any blood dyscrasias that occur in patients treated with APO-TERBINAFINE tablets should be evaluated and consideration should be given for a possible change in medication regimen, including discontinuation of treatment with APO-TERBINAFINE tablets.

## **Neurologic, Special Senses**

### **Sensory disturbances**

Disturbances of visual, auditory and tactile senses have been reported (see ADVERSE REACTIONS). If visual or hearing disturbances occur, APO-TERBINAFFINE Tablets should be discontinued.

#### Taste Disturbance Including Loss of Taste

Taste disturbance, including taste loss, has been reported with the use of APO-TERBINAFFINE Tablets. It can be severe enough to result in decreased food intake, weight loss, and depressive symptoms. Taste disturbance usually resolves within several weeks after discontinuation of treatment. Isolated cases of prolonged taste disturbances have also been reported. If symptoms of a taste disturbance occur, APO-TERBINAFFINE Tablets should be discontinued.

#### Smell Disturbance Including Loss of Smell

Smell disturbance, including loss of smell, has been reported with the use of APO-TERBINAFFINE Tablets. Smell disturbance may resolve after discontinuation of treatment, but may be prolonged (greater than one year), or may be permanent. If symptoms of a smell disturbance occur, APO-TERBINAFFINE Tablets should be discontinued.

### **Psychiatric**

#### Anxiety and depressive symptoms

Anxiety and depressive symptoms have occurred during postmarketing use of terbinafine secondary to taste disturbances, as well as independent of taste disturbances. If depressive symptoms occur, APO-TERBINAFFINE Tablets should be discontinued.

### **Carcinogenesis and Mutagenesis**

An increase in liver tumors was observed in male rats at the highest dose level (69 mg/kg) during a life-time (123 weeks) carcinogenicity study. The changes included increased enzyme activity, peroxisome proliferation and altered triglyceride metabolism. The changes have been shown to be species specific since they were not seen in mice or monkeys.

### **General:**

#### **Special Populations**

Women of child-bearing potential: Some cases of menstrual irregularities have been reported in patients taking APO-TERBINAFFINE tablets concomitantly with oral contraceptives, although the incidence of these disorders remains within the background incidence of patients taking oral contraceptives alone. There are no data to suggest special recommendations for women of child-bearing potential.

**Pregnant Women:** Animal fetal toxicity and fertility studies did not reveal any teratogenic or embryofetotoxic potential of terbinafine. However, there is only very limited documented clinical experience with terbinafine in pregnant women; therefore, unless the potential benefits outweigh any potential risks, APO-TERBINAFINE tablets should not be used during pregnancy.

**Nursing Women:** Terbinafine is excreted in breast milk; therefore mothers receiving oral treatment with APO-TERBINAFINE should not breast feed.

**Fertility:** No effect of terbinafine on fertility has been seen in animal studies (see section **TOXICOLOGY**) and there are no data to suggest an effect on fertility in humans.

**Geriatrics:** Plasma concentrations and drug half-life appear to be slightly higher in elderly patients than in the general population. In addition, the incidence of all adverse events in a Post Marketing Surveillance study appeared to be slightly higher in the elderly at normal adult doses; however, the overall rate of adverse events possibly or probably related to terbinafine did not appear to be different compared to the general population. When prescribing tablets for patients in this age group, the possibility of pre-existing impairment of liver or kidney function should be considered (see **PHARMACOKINETICS**).

**Pediatrics:** The safety and efficacy of terbinafine have not been established in pediatric patients. APO-TERBINAFINE should be kept out of the reach of children.

### **Occupational Hazards**

#### **Effects on ability to drive and use machines**

No studies on the effects of terbinafine tablets treatment on the ability to drive and use machines have been performed. Patients who experience dizziness as an undesirable effect should avoid driving vehicles or using machines.

## **ADVERSE REACTIONS**

### **Adverse Drug Reaction Overview**

*Because clinical trials are conducted under very specific conditions, the adverse reaction rates observed in the clinical trials may not reflect the rates observed in practice and should not be compared to the rates in the clinical trials of another drug. Adverse drug reaction information from clinical trials is useful for identifying drug-related adverse events and for approximating rates.*

*Frequency estimate: very common  $\geq 10\%$ , common  $\geq 1\%$  to  $< 10\%$ , uncommon  $\geq 0.1\%$  to  $< 1\%$ , rare  $\geq 0.01\%$  to  $< 0.1\%$ , very rare  $< 0.01\%$  (includes isolated reports).*

In general APO-TERBINAFINE (terbinafine hydrochloride) is well tolerated. Side effects are usually mild to moderate in severity and transient.

## Clinical Trials Adverse Drug Reactions

In clinical trials submitted for purposes of marketing approval in Canada adverse events occurred in 10.4% of patients receiving the recommended oral dose. Of these, 5% were mild to moderate gastrointestinal events (abdominal distension, decreased appetite, dyspepsia, nausea, mild abdominal pain, diarrhea), 3% were rash, urticaria and the remainder were for musculoskeletal reactions (arthralgia, myalgia) and miscellaneous non-specific events such as malaise or tiredness.

The following table of adverse events illustrates some of these results:

**Table I**

Organ System Adverse Event	TERBINAFINE* 250 mg (n = 998)	
	Number	(%)
<b>SKIN (overall)</b>	27	2.7%
Erythema or rash	9	0.9
Urticaria	5	0.5
Eczema	1	0.1
Pruritis	4	0.4
Other	8	0.8
<b>GI (overall)</b>	52	5.2
Diarrhea and/or cramps	10	1.0
Nausea and/or vomiting	11	1.1
Fullness	5	0.5
Sickness	1	0.1
G.I. irritation, dyspepsia, gastritis	22	2.2
Other	3	0.3
<b>CNS (overall)</b>	12	1.2
Headache	9	0.9
Concentration	2	0.2
Other	1	0.1
<b>OTHER (overall)</b>	11	1.1
Tiredness, fatigue	3	0.3
Pain (back, knee, legs, feet, kidney)	1	0.1
Change of taste or dry mouth	1	0.1
Other	6	0.6
<b>LABORATORY ADVERSE CHANGES (overall)</b>	2	0.2
Hypoglycemia	1	0.1
Elevated Liver enzymes	1	0.1
<b>TOTAL</b>	104	10.4

## Less Common Clinical Trial Adverse Drug Reactions (<1%)

Adverse events not frequently observed include the following:

Uncommon:                   Paresthesia and hypoesthesia



Rare: Idiosyncratic and symptomatic hepatobiliary reactions (2/3 primarily cholestatic in nature and the remainder involving hepatocytic damage or both) have been reported in association with terbinafine treatment, including very rare cases of serious liver failure (some leading to liver transplant or death). Unspecific prodromal symptoms (nausea, anorexia, fatigue, general malaise) have been reported. Liver enzyme increases have been noted in asymptomatic patients as well as in patients with more specific symptoms of hepatic dysfunction (jaundice, upper abdominal right quadrant pain, pruritus, pale stools, dark urine) (see **WARNINGS AND PRECAUTIONS**).

The frequency of reported apparent hepatic dysfunctions has varied. An analysis of 7 key placebo-controlled trials (262 placebo vs 1624 terbinafine patients) suggested increases of 1.4% vs 3.4% in liver function test indicators (APase, SGPT (AST), SGOT (ALT), g-GT, bilirubin >2x above upper normal). In a European post-marketing study in 25 884 patients, asymptomatic liver enzyme increases were reported in 0.17% of patients treated. The reporting frequency for symptomatic liver disorder possibly related to terbinafine was 1:13 000. The relative risk of acute liver injury in this group was considered to be 4.2 times the background incidence.

In the less controlled circumstances of spontaneous worldwide reporting, the development of clinically significant signs and symptoms of hepatobiliary dysfunction for which no other cause was apparent, and in which terbinafine was considered the possible causative agent, was calculated to be approximately 1:37 000 treated patients. The reporting frequency overall for hepatobiliary events including elevations in liver enzymes was 1:15 000. Very rare cases of liver failure, some fatal, have been associated with terbinafine treatment and the incidence rate is about 1:1 000 000 exposed patients.

**Hepatic failure, hepatitis, jaundice, cholestasis, hepatic enzyme increased (see WARNINGS AND PRECAUTIONS)**

**Post-Market Adverse Drug Reactions**

The following adverse drug reactions have been identified based on post-marketing spontaneous reports with terbinafine tablets and are organized by system organ classes. Because these reactions are reported voluntarily from a population of uncertain size, it is not always possible to reliably estimate their frequency.

Blood and lymphatic system disorders: neutropenia, agranulocytosis, thrombocytopenia, anemia, pancytopenia, thrombocytopenic purpura (TPP). The mechanism of TPP induction and the role of terbinafine have not been elucidated.

Immune system disorders: anaphylactic reaction including anaphylactic shock, respiratory compromised symptoms such as dyspnea, angioedema, serum sickness-like reaction, skin reactions (see Skin section), precipitation or exacerbation of cutaneous or systemic lupus erythematosus.

Psychiatric disorders: anxiety and depressive symptoms secondary to taste disturbances. Anxiety and depressive symptoms independent of taste disturbance have also been reported with use of terbinafine tablets.

Eye disorders: visual impairment, vision blurred, visual acuity reduced.

Ear and labyrinth disorders: hypoacusis, impaired hearing, tinnitus.

Vascular disorders: vasculitis.

Nervous system disorders: dizziness, anosmia including permanent anosmia, hyposmia. Dysgeusia including ageusia (hypogeusia, including ageusia, which usually recover within several weeks after discontinuation of the drug. Isolated cases of prolonged hypogeusia have been reported)

Gastrointestinal disorders: pancreatitis.

Musculoskeletal and connective tissue disorders: rhabdomyolysis, arthritis.

General disorders and administration site conditions: influenza-like illness, pyrexia.

Investigations: blood creatine phosphokinase increased, weight decreased (secondary to dysgeusia)

Skin and subcutaneous tissue disorders: Stevens Johnson syndrome, Toxic Epidermal Necrolysis, erythema multiforme, acute generalized exanthematous pustulosis, toxic skin eruption, dermatitis exfoliative, dermatitis bullous, psoriasiform eruptions or exacerbation of psoriasis, photosensitivity reactions (e.g. photodermatitis, photosensitivity allergic reaction and polymorphic light eruption) and alopecia.

## **DRUG INTERACTIONS**

### **Overview**

Many categories of drugs are known to inhibit or induce drug metabolism by cytochrome P450 (CYP) enzymes located in the liver and intestine. Co-administration of such drugs may impact metabolic elimination of drugs, and in some cases, bioavailability may be either increased or decreased and accordingly, possibly necessitate dosage adjustments (See **ACTION AND CLINICAL PHARMACOLOGY, Metabolism and Excretion**).

### **Drug-Drug Interactions**

#### **Effects of other medicinal products on terbinafine:**

**The following medicinal products may increase the effect or plasma concentration of terbinafine:**

Cimetidine decreased the clearance of terbinafine by 33%.

Fluconazole increased the  $C_{max}$  and AUC of terbinafine by 52% and 69%, respectively, in a randomized, open-label, single-dose, three-period crossover study (7 day washout) in healthy male adult subjects (n = 18), treated with 750 mg terbinafine, 100 mg fluconazole and 750 mg terbinafine plus 100 mg fluconazole. The interaction likely involves inhibition of CYP2C9 and CYP3A4 enzymes.

Theophylline increased the  $C_{max}$  and AUC of terbinafine by 25% each, and decreased the oral clearance of terbinafine by 24% in a randomized, open-label, single-dose, three-period crossover study, in healthy male and female adult subjects (n = 18) treated orally with 250 mg terbinafine, 375 mg theophylline, and 250 mg terbinafine plus 375 mg theophylline.

Ketoconazole may increase the systemic exposure to terbinafine, based on predicted inhibition of CYP2C9 and CYP3A4 (no studies were performed).

Amiodarone may increase the systemic exposure to terbinafine, based on predicted inhibition of CYP2C9 and CYP3A4 (no studies were performed).

Cotrimoxazole (trimethoprim sulfamethoxazole) did not alter the pharmacokinetics of terbinafine, in a randomized, open-label, single-dose, three-period crossover study (7 day washout) in healthy male and female adult subjects (n = 18), treated with 750 mg terbinafine, 160 mg trimethoprim plus 800 mg sulfamethoxazole, and 750 mg terbinafine plus 160 mg trimethoprim plus 800 mg sulfamethoxazole.

Zidovudine did not alter the pharmacokinetics of terbinafine, in a randomized, open-label, single-dose, three-period crossover study (7 day washout) in healthy male and female adult subjects (n = 18), treated with 750 mg terbinafine, 200 mg zidovudine, and 750 mg terbinafine plus 200 mg zidovudine.

**The following medicinal products may decrease the effect or plasma concentration of terbinafine:**

Rifampicin increased the clearance of terbinafine by 100%.

**Effect of terbinafine on other medicinal products:**

According to the results from studies undertaken in vitro and in healthy volunteers, terbinafine shows negligible potential for inhibiting or enhancing the clearance of most drugs that are metabolized via the cytochrome P450 system (e.g. terfenadine, triazolam, tolbutamide or oral contraceptives) with exception of those metabolized through CYP2D6 (see below).

Terbinafine does not interfere with the clearance of antipyrine or digoxin.

Terbinafine did not alter the pharmacokinetics of fluconazole in a randomized, open-label, single-dose, three-period crossover study (7 day washout) in healthy male adult subjects, treated with 750 mg terbinafine, 100 mg fluconazole and 750 mg terbinafine plus 100 mg fluconazole.

Terbinafine did not alter the pharmacokinetics of cotrimoxazole (trimethoprim and sulfamethoxazole), in a randomized, open-label, single-dose, three-period crossover study (7 day washout) in healthy male and female adult subjects (n = 18), treated with 750 mg terbinafine, 160 mg trimethoprim plus 800 mg sulfamethoxazole, and 750 mg terbinafine plus 160 mg trimethoprim plus 800 mg sulfamethoxazole.

Terbinafine reduced zidovudine  $C_{max}$  by 25%, increased AUC by 15%, reduced oral clearance by 15% and did not alter zidovudine plasma elimination half-life, in a randomized, open-label, single-dose, three-period crossover study (7 day washout) in healthy male and female adult subjects (n = 18), treated with 750 mg terbinafine, 200 mg zidovudine, and 750 mg terbinafine plus 200 mg zidovudine.

Some cases of menstrual irregularities have been reported in patients taking terbinafine tablets concomitantly with oral contraceptives, although the incidence of these disorders remains within the background incidence of patients taking oral contraceptives alone.

Single dose terbinafine did not significantly alter the pharmacokinetics of theophylline in a randomized, open-label, single-dose, three-period crossover study, in healthy male and female adult subjects (n = 18) treated orally with 250 mg terbinafine, 375 mg theophylline, and 250 mg terbinafine plus 375 mg theophylline.

Multiple dose terbinafine increased the AUC and half-life of theophylline by 16% and 24%, respectively, and decreased the oral clearance of theophylline by 14%, in a randomized, open-label, two-period crossover study in healthy male and female adult subjects (n = 12) treated orally with a single dose of 5 mg/kg theophylline alone (mean 345 mg, range 307 to 397 mg) and 2 hours after the last of 4 daily doses of 250 mg terbinafine.

**Terbinafine may increase the effect or plasma concentration of the following medicinal products:**

**Caffeine:** Terbinafine decreased the clearance of caffeine administered intravenously by 19%.

**Compounds predominantly metabolized by CYP2D6**

*In vitro* and *in vivo* studies have shown that terbinafine inhibits the CYP2D6-mediated metabolism. This finding may be of clinical relevance for compounds predominantly metabolized by CYP2D6, e.g. certain members of the following drug classes: tricyclic antidepressants (TCAs), beta-blockers, selective serotonin reuptake inhibitors (SSRIs), antiarrhythmics (including class 1A, 1B and 1C) and monoamine oxidase inhibitors (MAO-Is) Type B, particularly if they also have a narrow therapeutic window (see **WARNINGS AND PRECAUTIONS**). Case reports indicating interactions of terbinafine with tricyclic antidepressants e.g. nortriptyline and imipramine) have been reported in a post-marketing setting.

Terbinafine decreased the clearance of desipramine by 82%.

Terbinafine increased the dextromethorphan/dextrorphan metabolic ratio in urine by 16- to 97-fold on average, in healthy subjects, converting some extensive CYP2D6 metabolizers to poor metabolizer status after treatment with 250 mg terbinafine once daily for 14 days.

The effect of terbinafine on the dextromethorphan/dextrorphan metabolic ratio in urine was shown to be reversible, though the interaction potential may last for several weeks after termination of a terbinafine treatment cycle.

**Terbinafine may decrease the effect or plasma concentration of the following medicinal products:**

Terbinafine increased the clearance of ciclosporin by 15%.

**Drug-Herb Interactions**

St John's wort may considerably decrease the plasma concentration and exposure of terbinafine, however the extent of decrease in exposure is not known.

**DOSAGE AND ADMINISTRATION**

Adults: 125 mg b.i.d. or 250 mg once daily (See also **DOSING CONSIDERATIONS**).

The scored tablets are taken orally with water. They should preferably be taken at the same time each day and can be taken on an empty stomach or after a meal.

The duration of treatment varies according to the indication and the severity of infection:

**TABLE II**

<b>Indication</b>	<b>Duration of Treatment</b>
Onychomycosis (of fingers and toes)*	6 weeks to 3 months
Skin Infections** Tinea pedis (interdigital & plantar/moccasin type)	2-6 weeks
Tinea corporis, cruris	2-4 weeks

\* In patients with fingernail infections or toenail infections other than the big toe, or in younger patients, treatment periods of less than 3 months may be adequate. In patients with infections of the big toenail, treatment for 3 months is usually sufficient, although some patients may require treatment for 6 months or longer. Poor nail outgrowth during the first weeks of treatment may enable identification of those patients in whom longer therapy is required. In onychomycosis the optimal clinical effect is seen some months after mycological cure and cessation of treatment. This is related to the period required for outgrowth of healthy nail tissue.

\*\* Complete resolution of the signs and symptoms may not occur until several weeks after mycological cure.

**DOSING CONSIDERATIONS**

**Special populations:**

**Liver impairment**

APO-TERBINAFINE tablets are not recommended for patients with chronic or active liver disease (see Warnings and Precautions).

### **Renal impairment**

The use of terbinafine tablets has not been adequately studied in patients with renal impairment and is therefore not recommended in this population (see Warnings and Precautions).

### **OVERDOSAGE**

A few cases of overdosage with terbinafine tablets (up to 5 g) have been reported giving rise to headache, nausea, epigastric pain and dizziness. The recommended treatment of overdosage consists of eliminating the drug, primarily by the administration of activated charcoal and giving symptomatic supportive therapy, if needed.

For management of a suspected drug overdose, contact your regional Poison Control Centre.

## **ACTION AND CLINICAL PHARMACOLOGY**

### **Mechanism of Action**

Terbinafine is an allylamine which has a broad spectrum of antifungal activity. At low concentrations terbinafine is fungicidal against dermatophytes, molds and certain dimorphic fungi. Its activity against yeasts is fungicidal or fungistatic, depending on the species.

### **Pharmacodynamics**

Terbinafine interferes specifically with fungal sterol biosynthesis at an early step. This leads to a deficiency in ergosterol and to an intracellular accumulation of squalene, resulting in fungal cell death. Terbinafine acts by inhibition of squalene epoxidase in the fungal cell membrane. The enzyme squalene epoxidase is not linked to the cytochrome P450 system.

When given orally, terbinafine accumulates rapidly in skin, hair and nails at levels associated with fungicidal activity.

### **Pharmacokinetics**

**Absorption:** Following oral administration, terbinafine is well absorbed (>70%) and the absolute bioavailability of terbinafine from terbinafine tablets as a result of first-pass metabolism is approximately 50 %. A single 250 mg dose of terbinafine tablets resulted in mean peak plasma concentration of 1.3 µg/ml within 1.5 hours after administration. At steady-state (70% steady state is achieved in approximately 28 days), in comparison to a single dose, peak concentration of terbinafine was on average 25% higher and plasma AUC increased by a factor of 2.3. From the increase in plasma AUC an effective half-life of ~30 hours can be calculated. The

bioavailability of terbinafine is moderately affected by food (increase in the AUC of less than 20%), but not sufficiently to require dosing adjustments.

**Distribution:** Terbinafine binds strongly to plasma proteins (99%) and is lipophilic. Terbinafine is widely distributed in the body including adipose tissue. It rapidly diffuses through the dermis and concentrates in lipophilic stratum corneum. It is also secreted in sebum, thus achieving high concentrations in hair follicles, hair and sebum-rich skin. There is evidence that terbinafine is distributed in the nail plate within the first few weeks of commencing therapy.

**Metabolism and Excretion:** Oral terbinafine is excreted mainly in urine (80%) and in feces (20%). Following absorption terbinafine is metabolized rapidly and extensively by the liver. At least seven cytochrome isoenzymes are involved in its metabolism with major contributions from CYP 2C9, CYP 1A2, CYP 3A4, CYP 2C8 and CYP 2C19. Biotransformation results in metabolites with no antifungal activity which are excreted predominantly through the urine. No clinically relevant age-dependent changes in steady-state plasma concentrations of terbinafine have been observed. Multiple dose administration followed by extended blood sampling revealed a triphasic elimination with a terminal half-life of approximately 16.5 days

Following a single 250 mg dose in 12 hepatically impaired cirrhotic (alcoholic) patients, total clearance of terbinafine was reduced by about 40%. In a sample of 12 renally impaired patients (median creatinine clearance of 17.6 mL/min), terbinafine clearance following a single 250 mg dose was halved resulting in the doubling or more of peak plasma concentrations or AUC. Patients at the highest and lowest ends of the renal impairment spectrum were not represented. There was no direct correlation between creatinine clearance and terbinafine clearance in renally impaired patients, the metabolism of the drug having been impaired in these patients due to competition between metabolite and parent drug.

## STORAGE AND STABILITY

Store at temperatures between 15° and 30 ° C. Protect from light.

## DOSAGE FORMS, COMPOSITION AND PACKAGING

APO-TERBINAFINE 250 mg tablets: Each white, round, biconvex tablet with bevelled-edged, engraved “APO” on one side, “TER” over “250” and scored through the center on the other contains terbinafine hydrochloride equivalent to 250 mg terbinafine. Available in bottles of 100 and 500 and unit dose packages of 14, 28 and 30.

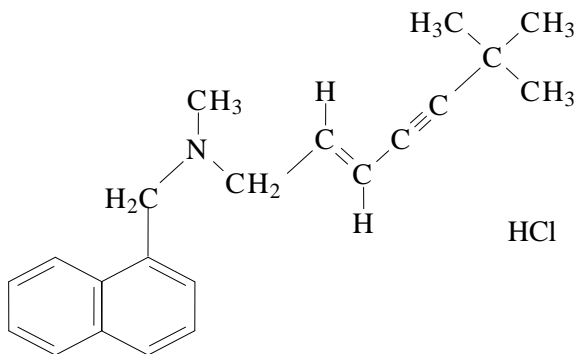
In addition to the active ingredient, terbinafine hydrochloride each 250 mg tablet also contains the non-medicinal ingredients: colloidal silicon dioxide, croscarmellose sodium, magnesium stearate and methylcellulose.

## PART II: SCIENTIFIC INFORMATION

### PHARMACEUTICAL INFORMATION

#### Drug Substance

Proper Name:	terbinafine hydrochloride
Chemical Name:	(E)-N-(6,6-dimethyl-2-hepten-4-ynyl)-N-methyl-1-naphthalene-methanamine hydrochloride
Molecular formula:	C <sub>21</sub> H <sub>25</sub> N • HCl
Molecular weight:	327.90
Structural Formula:	



Physicochemical properties: Terbinafine hydrochloride is a white to off-white finely crystalline powder with a melting point of ~205°C. The pKa (I) value is 7.10 and the pH of a solution (0.5%) in methanol/water 4:6 (v/v) is ~4.7 at 25°C. The solubility of terbinafine hydrochloride is 0.63% (w/v) in water and >2% (w/v) in chloroform.



## CLINICAL TRIALS

### Comparative Bioavailability Studies

A randomized, single dose, double-blinded, 2-way crossover comparative bioavailability study, conducted under fasting conditions, was performed on healthy male volunteers. The results obtained from 20 volunteers who completed the study are summarized in the following table. The rate and extent of absorption of terbinafine was measured and compared following a single oral dose (1 x 250 mg tablet) of Apo-Terbinafine (terbinafine hydrochloride) 250 mg tablet (Apotex Inc.) and Lamisil® (terbinafine hydrochloride) 250 mg tablet (Sandoz Canada Inc.):

<b>Table 3: Summary Table of the Comparative Bioavailability Data</b> Terbinafine (A single 250 mg dose: 1 x 250 mg) From Measured Data/Fasting Conditions Geometric Mean Arithmetic Mean (CV%)				
Parameter	Test*	Reference <sup>†</sup>	Ratio of Geometric Means (%)**	90% Confidence Interval (%)**
AUC <sub>0-72</sub> (ng•h/mL)	4134 4317 (28)	4290 4416 (23)	95.9	89.8 – 102.4
AUC <sub>inf</sub> (ng•h/mL)	4416 4611 (29)	4578 4718 (24)	96.0	89.9 – 102.5
C <sub>max</sub> (ng/mL)	827 861 (27)	838 883 (30)	99.0	90.0 – 108.8
T <sub>max</sub> <sup>§</sup> (h)	1.81 (33)	2.07 (38)		
T <sub>half</sub> <sup>§</sup> (h)	30.8 (12)	31.4 (16)		
* Apo–Terbinafine (terbinafine hydrochloride) 250 mg tablets (Apotex Inc.) † Lamisil® (terbinafine hydrochloride) 250 mg tablets (Sandoz Canada Inc.) was purchased in Canada. ** Based on the least squares estimate. § Expressed as arithmetic means (CV%) only.				

### *Onychomycosis*

Two studies evaluated the efficacy of oral terbinafine in the treatment of toe or fingernail onychomycosis.

## Study Demographics and Trial Design

### Summary of patient demographics for oral terbinafine clinical trials in onychomycosis

Study #	Trial design	Dosage, route of administration and duration	Study subjects (n=number)	Mean age (Range)	Gender	Race
SF1501	Randomized, double-blind (double-dummy), multicenter, parallel group, stratified enrolment (toe/fingernail) b.i.d. vs o.d. dosage	Terbinafine tablets, oral 125 mg b.i.d up to 48 wk (toenail) or 24 wk (fingernail)	51 enrolled 43 evaluable	45 (18-74)	Male = 34 Female = 9	Not reported
		Terbinafine tablets, 2x125 mg o.d. up to 48 wk (toenail) or 24 wk (fingernail)	52 enrolled 48 evaluable	45 (18-74)	Male = 34 Female = 14	Not reported

## Study Results

### Results of study SF1501 in onychomycosis

Primary Endpoints	b.i.d.	o.d.
	Number (%) patients	Number (%) patients
Mycological cure (negative KOH and culture) – all infections	Toenails	
	25/31 (81%)	28/35 (80%)
	Fingernails	
	10/10 (100%)	10/11 (91%)
Effective treatment (negative mycology plus continuous or limited nail growth) at end of treatment at week 24 - all infections	Toenails	
	24/32 (75%)	26/37 (70%)
	Fingernails	
	10/11 (91%)	10/11 (91%)

There were no significant differences between b.i.d and o.d. treatment regimens with respect to mycological cure rates or rates of effective treatment. Mycological cure at end of treatment was 95 % for fingernails and 80% for toenails. At follow-up visit 3-12 months later, over 81% of toenail onychomycosis were cured without relapse.

**Results of study SFO0423 in onychomycosis**

Primary Endpoints	Terbinafine Number (%) patients	Comparator Number (%) patients
Effective treatment (negative mycology plus continuous or limited nail growth) at end of treatment at week 24*	Toenail	
	11/20 (55%)	5/12 (42%)
	Fingernail	
	7/9 (78%)	8/10 (80%)
Mycological cure (negative culture and KOH) at week 24	Toenail	
	12/20 (60%)	5/12 (42%)
	Fingernail	
	7/9 (78%)	7/10 (70%)

\*The combined clinical/mycological endpoint was not specified in the protocol

Effective treatment in the terbinafine treated group was 78% fingernail and 55% toenail with treatment durations of 3-6 months. Griseofulvin was 80% and 42% effective for fingernails and toenails respectively. Thus, short duration therapy (3-6 months) using 500 mg per day of terbinafine appears effective in many patients with onychomycosis due to dermatophyte infections.

***Tinea Pedis***

**Study demographics and trial design**

**Summary of patient demographics for clinical trials in tinea pedis**

Study #	Trial design	Dosage, route of administration and duration	Study subjects (n=number)	Mean age (Range)	Gender	Race
<b>39-40OR</b>	Randomized, double-blind, multicenter, placebo-controlled	Terbinafine tablets (or matching placebo) 125 mg bid for 6 weeks; 2 week follow-up	Terbinafine Enrolled 26 Evaluable 23	37 years (20-64)	Male = 15 Female =8	92% Caucasian
			Placebo Enrolled 24 Evaluable 18	40 years (20-68)	Male = 13 Female=5	
<b>SF 0508</b>	Randomized, double-blind, multicenter, placebo-controlled	Terbinafine tablets (or matching placebo) 125x2 mg od for 2 weeks; 6 week follow-up	Terbinafine Enrolled 18 Evaluable 14	39 years (19-72)	Male = 20 Female =6	79% Caucasian
			Placebo Enrolled 19 Evaluable 14	45 years (20-82)	Male =23 Female = 4	

## Study results

### Results of placebo controlled studies 39-40OR, SFO508 in tinea pedis

Primary Endpoints	Terbinafine Number (%)	Placebo Number (%)
Mycological cure (negative culture and microscopy) at follow-up		
Study 39-40OR*	17/22 (77%)	0/6 (0%)
Study SF0508†	12/14 (86)%	1/14(7%)
Effective treatment (negative mycology and minimal signs and symptoms) at follow-up		
Study 39-40OR*	15/23 (65%)	0/18 (0%)
Study SF0508†	10/14 (71%)	0/14 (0%)

\* Too few placebo patients at follow-up to determine

† P <0.001, Fisher Exact test, one-sided

Placebo-controlled trials demonstrated a consistent treatment effect 2-6 weeks after cessation of treatment, whether assessed solely by mycological results, or when assessed by combined mycological and clinical parameters. Both 6-week and 2-week, o.d., and b.i.d. regimens were effective. In study 39-40OR, too few placebo patients returned at the follow-up visit to allow meaningful statistical analysis of results. Mycological cures and effective treatment rates at end of the 6 week treatment period, however, were significantly greater in the terbinafine treatment group than in the placebo group.

## DETAILED PHARMACOLOGY

The mechanism of action of terbinafine involves specific inhibition of fungal ergosterol biosynthesis at the point of squalene epoxidation, leading to a deficiency of an essential component of the fungal cell membranes (i.e. ergosterol) and to intracellular accumulation of the precursor squalene. The latter effect appears to be responsible for the primary fungicidal activity, its consequent disruption of cell membranes and cell wall synthesis having been noted in ultrastructural studies of terbinafine treated fungi. This mechanism distinguishes terbinafine from the azole antimycotics, which affect a later step in ergosterol biosynthesis by inhibiting 14 %-demethylase, a cytochrome P-450 enzyme upon which terbinafine has no effect. In contrast to many azoles, terbinafine does not bind to cytochromes P-450 in mammalian steroidogenic tissues.

The pharmacokinetics of orally administered terbinafine in plasma can best be described by a 2-compartment model. More than 80% of the dose is absorbed, clearance of the drug is high, it is extensively metabolized in the liver, and it is extensively distributed in the tissues. The peak plasma concentration is proportional to the dose, and the time to peak is ~ 2 hours, independent of the dose.

Mean concentrations of terbinafine (in µg/g) measured in the stratum corneum, dermis/epidermis, hair, sweat, and sebum during and after 12 days of 250 mg terbinafine per day in 10 healthy volunteers were as follows before (day 0), during (days 2, 6, 12) and after treatment (days 13 and 16).

Day	0	2	6	12	13	16
Stratum corneum	0.11	0.86	2.84	9.05	5.08	3.06
Derm / epiderm	0	0.05	0.23	0.35	0.11	0.14
Sebum	0	38.2	43.1	39.7	45.1	18.8
Hair	0.02	0.24	1.30	2.60	2.11	1.35
Sweat	0	0	0	0	0	0

The pattern of tissue distribution suggests a rapid diffusion of drug through the dermis/lower epidermis into the stratum corneum, where maximal concentrations were achieved at day 12, and the  $t_{1/2}$  was 3-4 days (this implies that the concentrations of terbinafine would remain above the MIC for most dermatophytes for 3 weeks). Another route of terbinafine distribution likely to be important for the treatment of dermatomycosis would be secretion into sebum, in which drug levels were high and persisted for several days after cessation of treatment.

In a study evaluating the efficacy of terbinafine in the treatment of onychomycosis, plasma levels were measured monthly in 9 patients, half of whom received 250 mg terbinafine q.d. in the evening and the other half 125 mg b.i.d. A pharmacokinetic steady state was attained at or before 4 weeks, the first analysis time point available. The steady-state plasma concentrations were 0.22 - 0.56 and 0.15 - 0.35 µg/ml for the b.i.d. and q.d. doses, respectively, and did not increase over time.

## **Microbiology**

### ***In vitro***

The minimum inhibitory concentrations (MICs) of terbinafine were determined by serial dilution tests against yeasts, molds, dermatophytes, *Pityrosporum* spp., and *Sporothrix schenkil*. The spectrum and MIC values obtained for the various species and strains of fungi at different research laboratories (summarized as a range of activity in the following table) demonstrate that terbinafine possesses a high activity against dermatophytes, aspergilli, and dimorphous or dermatiaceous fungi. The susceptibility of blastospores of various species and strains of yeasts to terbinafine is much lower with MIC's ranging from 0.1 to > 128 µg/ml.

## Summary of results published on *in vitro* activities of terbinafine against pathogenic and opportunistic fungi

	Fungus	MIC range (µg/mL)
I.	<b>Dermatophytic Fungi</b>	
	Trichophyton mentagrophytes	0.001-0.01
	rubrum	0.001-0.01
	rubrum verrucosum	0.001-0.006
	Epidermophyton floccosum	0.001- <0.06
	Microsporum canis	0.005-0.01
	Microsporum gypseum	0.005-0.01
	Microsporum persicolor	0.002-0.003
II.	<b>Filamentous Fungi</b>	
	Aspergillus spp.	0.005-15.0
	Aspergillus flavus	0.01-0.5
	Aspergillus fumigatus	0.02-5.0
	Aspergillus niger	0.005-0.5
	Aspergillus terreus	0.05-5.0
	Pseudallescheria boydii	32.00- >64.0
	Mucor, Rhizopus spp.	64.0- >125.00
	Acremonium spp.	1.0-4.0
	Curcularia fallax	0.25-0.5
	Fusarium spp.	32.0- >64.0
	Hendersonula toruloidea	1.0-4.0
	Lasiodiplodia theobromae	0.25-0.5
	Paecilomyces spp.	8.0-64.0
	Scopulariopsis brevicaulis	0.5-8.8
Scytalidium hyalinum	1.0-4.0	
III.	<b>Dimorphic Fungi</b>	
	Blastomyces dermatitidis	0.05-0.39
	Histoplasma capsulatum	0.05-0.2
	Sporothrix schenckii	0.05-0.2
IV.	<b>Pathogenic Yeasts</b>	
	Cryptococcus neoformans	0.25-2.0
	Pityrosporum spp.	0.2-0.8
V.	<b>Dematiaceae</b>	
	Phaeochyphomyces complex*	<0.06-0.5
	Chromoblastomycosis complex**	0.06-2.0

\* = *Exophiala jeanselmei*, *Wangiella dermatitidis*, *Cladosporium bantianum*

\*\* = *Fonseceas pedrosoi*, *Phialophora* spp.

Terbinafine was primarily fungicidal against *T. mantagrophytes*, *M. canis*, *A. fumigatus*, *Sc. brevicaulis*, *S. schenckii*, and *C. parapsilosis*.

## TOXICOLOGY

### Acute Toxicity

Species	Sex	Route	LD50
Mouse	M,F	Oral	>4 g/kg
	M,F	i.v.	393 mg/kg
	M,F	1% solution orally	> 250 mg/kg
Rat	M,F	Oral	>4 g/kg
	M,F	i.v.	213 mg/kg

	M,F	1% cream orally	25 mg/kg (no mortalities)
	M,F	1% solution orally	>200 mg/kg
Rabbits	M,F	Topical (suspension)	>1.5 g/kg

## Long Term Toxicity

SPECIES	LENGTH OF ADMIN.	ROUTE	DOSES (mg/kg)	RESULTS
RAT	26 weeks	oral	0, 30, 100, & 300	↑ in liver weights in the mid & high dose groups; ↑ in kidney and heart weights in high dose group; ↑adrenal weight all dose groups. In all animals allowed a recovery period organ weights showed signs of reversibility. At all doses males showed ↑ incidence & severity of spontaneous nephropathy. At mid & high doses, livers of female rats showed enlargement of centrilobular hepatocytes. Histological evidence of recovery in liver but not in kidney on cessation of treatment.
	52 weeks	oral	M: 6.9, 20, 68 F: 9.3, 28, 95	Reversible ↑ in kidney weight in mid and high-dose males and liver weight in high dose females. No histopathological organ or tissue changes or evidence of drug-related tumorigenesis. No proliferation of smooth endoplasmic reticulum or peroxisomes. No-toxic-effect level in males 68 mg/kg; in females 95 mg/kg.
Pre and Post pubertal RATS	55 days	oral	0, 25, 75, 250	In 15 day old rats treated until 70 days of age, the mid and high doses were toxic as shown by death of some animals at these dose levels. Reduction in mean body weight gain was also seen in these dose groups.
Juvenile RATS	55 days	oral	0, 10, 25, 45, 100	Well tolerated in rats treated from 15 to 70 days of age. 1 death in low dose group. Slight increase in liver weights of high dose females.
DOGS	26 weeks	oral	0, 20, 60, 200	Initial hypersalivation in mid and high dose groups; sporadic emesis in high dose group. Haematological parameters remained unchanged throughout experiment. At end of treatment livers of 3 of 4 high dose dogs contained lamellated intracytoplasmic inclusions. The no-toxic-effect level was 60 mg/kg.
	52 weeks	oral	0, 10, 25, 100	Mid and high dose groups showed sporadic emesis and slightly inhibited body weight gain. High dose groups showed sporadic hypersalivation and reduced food intake. Females of all dose groups showed slightly lower triglyceride values.

## REPRODUCTION STUDIES

SPECIES	DURATION	ROUTE OF ADMIN.	DOSES (mg/kg)	RESULTS
RATS	Fertility & Reproduction Study M: 63 days prior to mating F: 14 days prior to mating to weaning	oral	10, 50, 250	In the high dose group a lower pregnancy rate, mean number of implants and living pups per dam were observed as well as a high pre- and perinatal offspring mortality. Physical and functional development of the offspring was also retarded. The fertility and general reproductive performance of the offspring were normal at all dose levels tested.
	Embryotoxicity study Days 6 to 15 postcoitum	oral	30, 100, 300	Inseminated female rats treated with terbinafine tolerated doses up to 100 mg/kg well. Lower body weight gain was seen at 300 mg/kg. No embryo-lethal or teratogenic effects were seen.
	Peri & post-natal study Day 15 postcoitum to day 21 postpartum	oral	30, 100, 300	Inseminated female rats treated with terbinafine tolerated all doses well. No clinical signs or relevant reproductive changes in any group.
	Embryotoxicity study Day 6 to 15 postcoitum	subcutaneous	10, 30, 100	In the high dose group dams gained less body weight and had skin irritation at the injection site. A tendency to lower body weight gains was also noted in the mid-dose group. No adverse effects observed on pregnancy or embryonic or fetal development in any group.

RABBITS	Embryotoxicity study Day 6 to 18 postcoitum	oral	30, 100, 300	Inseminated female rabbits treated with terbinafine tolerated doses up to 100 mg/kg well. In the high-dose group weight loss was observed in some dams, 2 of which had to be euthanized due to poor health. No relevant reproductive alterations were seen at any dose level.
---------	--	------	--------------	---

### Mutagenicity

*In vitro* and *in vivo* mutagenicity testing revealed no specific mutagenic or genotoxic properties of terbinafine. *In vitro* tests of cell transformation to malignancy were negative.

### Carcinogenicity

#### CARCINOGENICITY

SPECIES	DURATION	ROUTE	DOSES (mg/kg)	RESULTS
MICE	100 weeks	oral	M: 14, 40, 130 F: 16, 60, 156	There was a slight inhibition of body weight gain in the mid- and high-dose females. Macroscopic and microscopic examinations revealed no neoplastic or other findings which were attributable to treatment with terbinafine.
RATS	123 weeks	oral	M: 6.9, 20, 69 F: 9.6, 28, 97	Ophthalmoscopy revealed an ↑ in incidence of cataracts in males at high doses. No treatment related cataract changes occurred after 52 weeks, and such eye changes are known to occur spontaneously in old rats. ↑ incidence of enlarged swollen livers and liver nodules in the high dose animals, particularly males. Slight ↑ incidence of hepatocellular tumours in the high dose males. Females of the high dose group showed a slightly greater incidence and extent of hepatocellular necrosis, suggesting the high dose was at the threshold of a toxic response.

### Additional studies

The following additional chronic toxicity and genotoxicity studies were performed to investigate the findings of the life-time rat study and their relevance to man.

#### 4-week oral toxicity study in rats with special emphasis on hepatic alterations

#### 4-WEEK ORAL TOXICITY STUDY IN RATS WITH SPECIAL EMPHASIS ON HEPATIC ALTERATIONS

SPECIES	DURATION	ROUTE	DOSES (mg/kg)
RAT	4 weeks	oral	M: 100, 465; F: 108, 530
<b>RESULTS</b>			
FEED INTAKE & BODY WEIGHT GAIN	Only at the high dose level were significant decreases in food intake and body weight gain recorded.		



SPECIES	DURATION	ROUTE	DOSES (mg/kg)
CLINICAL CHEMISTRY	At the high-dose level reduced serum glucose (both sexes) and serum triglyceride levels (both sexes) and increased SGPT, SAP (females), and BUN (males) were seen. Significantly lower corticosterone plasma levels were found in high-dose animals and higher testosterone and estradiol plasma levels in low-dose males and females respectively.		
LIVER MEASUREMENTS	Increased cytochrome P-450 content (high dose males) cytochrome b <sub>5</sub> contents (high dose males and females), cytochrome b <sub>5</sub> reductase activity (high dose males), 7-ethoxy-coumarin-O-deethylase activity (per mg cytochrome P-450; in low- and high-dose females), and peroxisomal palmitoyl-CoA epoxidase activity (low dose females and high dose males and females). Determination of liver compartments indicated a slight reduction of water content (high dose males), an unchanged protein content, and an increased lipid moiety (low dose males and high-dose males and females).		
POSTMORTEM FINDINGS	Increased absolute and relative liver, and relative kidney weights (high dose males and females), mild hepatic centrilobular hypertrophy (high-dose only), increase in peroxisome numbers, and abnormal peroxisome shape (high-dose males). Slight increase in hepatic peroxisome size and number (high dose males and females). In high-dose group, numerous abnormal peroxisomes were found in both sexes, as well as a slight proliferation of the SER.		

**Effects of 13-week treatment on selected toxicological variables in rats**

**EFFECTS OF A 13-WEEK TREATMENT ON SELECTED TOXICOLOGICAL VARIABLES IN RATS**

SPECIES	DURATION	ROUTE	DOSES (mg/kg)	RESULTS
RATS	13 weeks	oral	M: 72 F: 102	Slight decrease in serum triglycerides (significant in males only), slight increase in albumin (females); these changes were observed in test weeks 5 and 8 only. Relative liver weights were increased as was palmitoyl-CoA epoxidase activity. There was no evidence of hepatic peroxisomal morphological abnormalities; however peroxisome numbers were increased in both sexes.

#### 4-week oral toxicity study in mice

#### 4-WEEK ORAL TOXICITY STUDY IN MICE

SPECIES	DURATION	ROUTE	DOSES (mg/kg)	RESULTS
MICE	4 weeks	oral	M: 103, 510 F: 107, 512	Slightly impaired liver function in males only. Slight induction of the cytochrome P-450 and b5 systems was seen (biologically relevant only at the high-dose level and more marked in males than females), as well as ethoxycoumarin-O-deethylase activity. The peroxisomal marker palmitoyl-CoA-epoxidase was slightly increased at all dose levels (in both sexes); no changes in the size or number of peroxisomes were seen. There seemed to be a link between the degree of induction of some major hepatic enzyme systems and the moderate hepatic centrilobular hypertrophy observed histologically (and more generally the liver weight increases). Endocrinological examinations revealed higher basal corticosterone levels in a number of low and high-dose animals.

#### Preliminary toxicity study in monkeys

#### PRELIMINARY TOXICITY STUDY IN MONKEYS

SPECIES	DURATION	ROUTE	DOSES (mg/kg)	RESULTS
MONKEYS	28 days	by gavage	500	Emesis and hypersalivation were observed on several occasions. The female showed consistent weight loss during the first 3 weeks and slight recovery thereafter. Liver weights were increased in both the treated animals, but there were no histopathological changes. No treatment-related changes in the peroxisome population or general cellular ultrastructure were seen. Increased activity of hepatic palmitoyl CoA-epoxidase indicated increased peroxisomal fatty oxidation. Cytosolic epoxide hydrolase activity was below detectable limit.

### **32-week oral toxicity in monkeys**

#### **32-WEEK ORAL TOXICITY STUDY IN MONKEYS**

<b>SPECIES</b>	<b>DURATION</b>	<b>ROUTE</b>	<b>DOSE (mg/kg)</b>	<b>RESULTS</b>
MONKEY	32 weeks	Oral	50, 150, 300	Eye lesions were seen after 26 weeks of treatment. Ophthalmoscopy revealed white spots on the retina in mid and high dose animals. No similar changes were seen at earlier examination. No morphological changes were seen in any layer of the retina. After withdrawal of terbinafine, the changes described recover fully (after a 13 week recovery period).

#### **Test for tumour-initiating activity in the rat liver foci bioassay**

After partial hepatectomy, rats were treated with a single oral dose of 1 g/kg terbinafine (controls were treated with N-nitrosomorpholine [NNM]) followed by an 8-week treatment with phenobarbital (for promotion of growth of putative preneoplastic foci). A significant increase in foci/cm was seen only in NNM-treated animals in comparison with the respective control groups. No differences were observed between control animals (treated only with phenobarbital) and those treated with terbinafine plus phenobarbital. It was concluded that terbinafine did not have tumour-initiating potential even in combination with a tumour promoting agent.

#### **Autoradiographic determination of the induction of DNA repair/synthesis and cell replication in rat hepatocyte primary cultures after in vivo treatment**

No evidence was found for any induction of either DNA repair or DNA replication in the hepatocytes from terbinafine treated rats, and the frequency of replicating nuclei were in the control range.

#### **Mutagenicity test using Salmonella typhimurium**

Liver fractions from male rats treated for 13 weeks with 69 mg/kg/day of terbinafine and non-treated control rats were used to evaluate terbinafine for genetic activity. There was no evidence that repeated treatment of rats with terbinafine induces enzymes capable of producing mutagenic intermediates of terbinafine.

## REFERENCES

- 1) Battig FA, Nefzger M, Schulz G. Major biotransformation routes of some allylamine antimycotics. IN: Recent trends in the discovery, development and evaluation of antifungal agents. Edit RA Fromtling; Publ JR Prous Science Publishers S.A., Barcelona 1987; pp 479-495
- 2) Battig FA, Nefzger M, Czok R. Pharmacokinetics and biotransformation of the 14C labelled drug in laboratory animals and man. IN: Proceedings, 13th International Congr of Chemother Austria, Aug 28-Sept 2, 1983; Edit KH Spitzzy, K Krrer; Publ H Egermann, Neulengbach, Austria. Part 116, pp 37-40
- 3) Baudraz-Rosselet F, Rakosi T, Wili PB, Kenzelmann R. Treatment of Onychomycosis with terbinafine. Brit J Derm; Vol 126, suppl 39, February 1992
- 4) Bechter R. Effects of antimycotic compounds on sperm function, on fertilization and on preimplantation embryos *in vitro*. Experientia (Basel) Vol 45 (suppl) p A67; 1989; Abstr no P PHA 332; ISSN 0014-4754
- 5) Bergstresser PR et al. Topical terbinafine and clotrimazole in interdigital tinea pedis: A multicenter comparison of cure and relapse rates with 1- and 4- week treatment regimens. J Am Acad Dermatol Vol 28, pp 648-651, 1993
- 6) Berman B. et al. Efficacy of a 1 week, twice daily regimen of terbinafine 1% cream in the treatment of interdigital tinea pedis. Results of placebo-controlled, double-blind multicenter trials. J Am Acad Dermatol Vol 26 (6), pp 956-960, 1992
- 7) Bertz R.J., Granneman, G.R. Use of *in vitro* and *in vivo* data to estimate the likelihood of metabolic pharmacokinetic interactions. Clin Pharmacokinet Vol. 32 (3), pp. 210-58, 1997
- 8) Boxenbaum H, Battle M. (1995) Effective half-life in clinical pharmacology. Journal of Clinical Pharmacology 35:763-766.
- 9) Clayton YM. Dermatophyte infections. Bailliere's Clin Trop Med Commun Dis, 1989; Vol. 4, no 1, pp 1-29
- 10) Cordero C, de la Rosa I, Espinosa Z, Rojas RF, Zaias N. Short-term therapy of tinea cruris/corporis with topical terbinafine. J of Dermatological Treatment, Vol. 3, (Suppl. 1), p. 23-24, 1992
- 11) Del Palacio-Hernanz A, Lopez-Gomez S, Gonzalez-Lastra F and al. A comparative double-blind study of terbinafine (LAMISIL) and griseofulvin in tinea corporis and tinea cruris. Clin Exp Dermatol 1990; Vol 15, pp 210-216; ISSN 0307-6938

- 12) Del Palacio-Hernanz A, Lopez-Gomez S, Iglesias-Diez L and al. Clinical evaluation of terbinafine (LAMISIL) in dermatophytosis Vol 89, p 40. J Dermatol Treat 1990; Vol 1, suppl 2, pp 339-40
- 13) De-wit RFE. A randomized double-blind multicentre comparative study of LAMISIL (terbinafine) versus ketoconazole in tinea corporis. J Dermatol Treat 1990; Vol 1, suppl 2, pp 41-42
- 14) Editorial. Onychomycosis and terbinafine. Lancet 1990; Vol 335; p 636. ISSN 0140-6736
- 15) Effendy I, Krause W. *In vivo* effects of terbinafine and ketoconazole on testosterone plasma levels in healthy males. Dermatologica (Basel) 1989; Vol 178, pp 103-106; ISSN 0011-9075
- 16) Espinel-Ingroff A, Gebhart RJ, Shadomy S. *In vitro* studies with SF 86-327, an orally active antifungal agent. IN: 24th Interscience conference on antimicrobial agents and chemother Washington, Oct 1984; Publ Amer Soc Microbiology 1984; p 144, Abstr 05; ISSN 0733-6373
- 17) Glyn E., Evans, V., Sigurgeirsson, B. Double-Blind Reandomised Study of continuous terbinafine compared with intermittent itraconazole in treatment of toenail onychomycosis. BMJ Volume 318, 1999, p.1031-1035
- 18) Goodfield MJD. Clinical results with terbinafine in onychomycosis. J Dermatol Treat 1990; Vol 1, suppl 2; pp 55-57
- 19) Goodfield MJD, Rowell NR, Forster RA and al. Treatment of dermatophyte infection of the finger- and toe-nails with terbinafine (SF 86-327, LAMISIL) an orally active fungicidal agent. Brit J Derm 1989; Vol 121, pp 753-757; ISSN 0007-0963
- 20) Grimus R, Schuster I. Uptake distribution and metabolism in the rat. A comparison of *in vitro* and *in vivo* data (SF 86-327). IN: Proceedings, 13th Internat Congr of Chemother, Austria, Sept 28, 1983. Edit KH Spitzzy, K Karrer. Publ H Egermann, Neulengbach, Austria. Part 116 pp 47-51
- 21) Jensen JC. Clinical pharmacokinetics of terbinafine (LAMISIL) Clin Exp Dermatol 1989; Vol 14, pp 110-113; ISSN 0307-6938
- 22) Jensen JC. Pharmacokinetics of LAMISIL in humans. J Dermatol Treat 1990; Vol 1, suppl 2, pp 15-18
- 23) Jones TC, Villars VV. Terbinafine. Chemotherapy of fungal diseases. Edit. JF Ryley. Publ Springer-Verlag, Berlin, Heidelberg, 1990; pp 483-503 (series Handbook of experimental pharmacology, vol 96)

- 24) Kagawa S. Clinical efficacy of terbinafine in 629 Japanese patients with dermatomycosis. *Clin Exp Dermatol* 1989; Vol 14, pp 114-115; ISSN 0307-6938
- 25) Kovarik JM, Mueller EA, Zehender H, Denouel J, Caplain H, Milleroux L. Multiple-dose pharmacokinetics and distribution in tissue of terbinafine and metabolites. *Antimicrobial Agents and Chemotherapy* 1995, 39:2738-2741.
- 26) Lazardi K, Urbina JA, De-Souza W. Ultrastructural alterations induced by two ergosterol biosynthesis inhibitors, ketoconazole and terbinafine, on epimastigotes and amastigotes of *Trypanosoma (schizotrypanum) cruzi*. *Antimicrob Agents-Chemother* 1990; Vol 34, pp 2097-2105; ISSN 0066-4804
- 27) Lever LR, Thomas R, Dykes PJ and al. Investigation of the pharmacokinetics of oral and topical terbinafine. *Clin Res* 1989; Vol 37, p 726A; ISSN 0009-9279
- 28) Long C.C., Hill S.A., Thomas R.C., Johnston A, Smith S.G., Kendall F. and Finlay A.Y. (1994) Effect of terbinafine on the pharmacokinetics of cyclosporin in humans. *Journal of Investigative Dermatology*; 102:740-743.
- 29) Madani S, Barilla D, Cramer J, Wang Y, Paul C, Effect of terbinafine on the pharmacokinetics and pharmacodynamics of desipramine in healthy volunteers identified as cytochrome P450 2D6 (CYP2D6) extensive metabolizers. *Journal of Clinical Pharmacology* 2002; 42:1211-1218.
- 30) Male O, Stephen A, Mieth H. Allylamines: a novel therapeutic option in the treatment of fungal skin infections. IN: *Recent advances in chemotherapy: antimicrobiol section. 14<sup>th</sup> Internat Congr Chemother, June 23-28 1985. Publ Univ Tokyo Press, 1985; pp 1950-1951*
- 31) Male O, Villars V. The topical treatment of dermatomycoses with allylamines. IN: *Proceed 10th Congr Int Soc for human and animal mycology, Barcelona 1988. Edit JM Torres-Rodriguez; Publ JR Prous Science, Barcelona 1988; pp 227-230*
- 32) Mekler PH, Richardson BP, Brueggemann S and al. Evaluation of toxicity in laboratory animals, tolerance and pharmacokinetics after oral application to man. IN: *Proceed. 13th Internat Congr of Chemother Vienna, Aug 28 - Sept 2, 1983. Publ H Egermann, Neulengbach, Austria 1983; Vol 89, p 53. Part 116 pp 52-58*
- 33) Mieth H, Petranyi G. Preclinical evaluation of terbinafine *in vivo*. *Clin Exp Dermatol* 1989; Vol 14, pp 104-107; ISSN 0307-6938
- 34) Millikan LE. Efficacy and tolerability of topical terbinafine in the treatment of tinea cruris. *J Amer Acad Dermatol* 1990; Vol 23 (no 4/part 2 suppl) pp 795-799; ISSN 0190-9622

- 35) Nashan D, Knuth UA, Weidinger G and al. The antimycotic drug terbinafine in contrast to ketoconazole lacks acute effects on the pituitary-testicular function of healthy men: a placebo-controlled double-blind trial. *Acta Endocr (Copenh)* 1989; Vol 120, pp 677-681;ISSN 0001-5598
- 36) Nedelman J, Cramer JA, Robbins B, Gibiansky E, Chang C, Gareffa S, Cohen A, Meligeni J (1997). The effect of food on the pharmacokinetics of multiple dose terbinafine in young and elderly healthy subjects. *Biopharmaceutics & Drug Disposition* 18 (2):127-138.
- 37) Petranyi G, Meingassner JG, Mieth H. Experimental chemotherapeutic results with SF 86-327, a new antimycotic agent. *ZBL Bakteriolog Mikrobiolog Hygiene (A)* 1986; Vol 262, pp 158-159
- 38) Ryder NS. The mechanism of action of terbinafine. *Clin Exp Dermatol* 1989; Vol 14, pp 98-100; ISSN 0307-6938
- 39) Ryder NS. Mode of action of SF 86-327 in candida and trichophyton. IN: 24<sup>th</sup> Interscience Conference on antimicrobial agents and chemotherapy, Washington US, Oct 1984. *Publ Amer Soc Microbiology*; Vol 10, pp 104-144. Abstr 306; ISSN 0733-6373
- 40) Ryder NS. Specific inhibition of fungal sterol biosynthesis by SF 86-327, a new allylamine antimycotic agent. *Antimicrob agents-chemother* 1985; Vol 27, pp 252-256; ISSN 0066-4804
- 41) Savin RC. Successful treatment of chronic tinea pedis (moccasin type) with terbinafine (LAMISIL). *Clin Exp Dermatol* 1989; Vol 14, pp 116-119; ISSN 0307-6938
- 42) Savin RC. Treatment of chronic tinea pedis (athlete's foot type) with topical terbinafine. *J Amer Acad Dermatol* 1990; Vol 23 (no 4/part 2, suppl) pp 786-789; ISSN 0190-9622
- 43) Schuster I. The interaction of representative members from two classes of antimycotics - The azoles and the allylamines - with cytochromes-450 in steroidogenic tissues and liver. *Xenobiotica* 1985; Vol 15, pp 529-546; ISSN 0049-8254
- 44) Seyffer R., Eichelbaum M., Jensen J.C., Klotz U. Antipyrine metabolism is not affected by terbinafine, a new antifungal agent. *European journal of clinical pharmacology*. 1989, 37:231-233.
- 45) Stephen A, Czok R, Male O. Terbinafine: initial clinical results. IN: Recent trends in the discovery, development and evaluation of antifungal agents; *Publ JR Prous Science Publ SA, Barcelona* 1987; pp 511-520

- 46) Stephen A, Ganzinger U. Oral treatment of dermatophytosis with a new antifungal agent. IN: Proceed, 13th Internat Congr of Chemother, Vienna, Aug 28-Sept 2 1983; Publ H Egermann, Neulengbach, Austria 1983. Part 116, pp 59-60
- 47) Stephen A, Ganzinger U, Czok R. SF 86-327: Results of Phase II studies with a new antifungal agent for oral and topical application. IN: Recent advances in chemotherapy: antimicrobiol section; 14th Internat Congress of chemotherapy, Kyoto, June 23-38, 1985. Publ Univ Tokyo Press, 1985; pp 1946-1947
- 48) Tarral A., Francheteau P., Guerret M. Effects of terbinafine on the pharmacokinetics of digoxin in healthy volunteers. *Pharmacotherapy*. 1997, 17: 791-795.
- 49) Wahllaender A, Paumgartner G. Effect of ketoconazole and terbinafine on the pharmacokinetics of caffeine in healthy volunteers. *European Journal of Clinical Pharmacology* 1989;37:279-283.
- 50) Zaias N. Management of onychomycosis with oral terbinafine. *J Amer Acad Dermatol* 1990; Vol 23 (no 4/part 2, suppl) pp 810-812; ISSN 0190-9622
- 51) Zaias N, Berman B, Cordero C et al. Efficacy of a 1-week, once-daily regimen of Terbinafine 1% Cream in the treatment of t. cruris and t. corporis. *J of the Amer Academy of Dermatology*, Vol. 29, p. 646-648, 1993
- 52) Zaias N, Serrano L. Effectiveness and safety of SF 86-327 (terbinafine) in the treatment of T Rubrum onychomycosis. IN: *Dermatology in five continents, Proceed of the 27<sup>th</sup> World Congr of Dermatol Berlin May 24-29, 1987*. Publ Springer-Verlag 1988; pp 913-914
- 53) Zanger UM., Sebastian Raimundo S., Eichelbaum M. Cytochrome P450 2D6: overview and update on pharmacology, genetics, biochemistry. *Naunyn-Schmiedeberg's Arch Pharmacol* 2004, 369: 23-37.
- 54) Product Monograph - LAMISIL (terbinafine hydrochloride) 150 and 250 mg tablets (expressed as base), topical cream 1% w/w (10 mg/g), topical spray solution 1% w/w (10 mg/g). Novartis Pharmaceuticals Canada Inc. Date of Revision: April 8, 2013. Control number: 161770.



**PART III: CONSUMER INFORMATION**

<sup>PR</sup>APO-TERBINAFINE  
(terbinafine hydrochloride)  
250 mg tablets

This leaflet is part III of a three-part “Product Monograph” published when APO-TERBINAFINE was approved for sale in Canada and is designed specifically for Consumers. This leaflet is a summary and will not tell you everything about APO-TERBINAFINE. Contact your doctor or pharmacist if you have any questions about the drug.

Keep this leaflet. You may need to read it again. This medicine has been prescribed only for you. Do not give it to anybody else or use it for other illnesses. Read all of this leaflet carefully before you start treatment. Follow all your doctor’s instructions carefully, even if they differ from the general information contained in this leaflet.

**ABOUT THIS MEDICATION****What the medication is used for:**

APO-TERBINAFINE is used to treat fungal infections of skin, fingernails and toenails:

- APO-TERBINAFINE tablets are used to treat fungal infections of the nail (toes, fingers) and may be used for certain fungal skin infections that do not respond to topical treatment.

Consult your doctor to confirm which type of fungal skin infection you have. Your doctor can determine if APO-TERBINAFINE is the right treatment for you.

The treatment should only be taken as prescribed by your doctor. Some evidence of infection may still be present at the end of treatment. This will gradually diminish.

**What it does:**

Terbinafine belongs to the group of medicines called antifungal agents and is used to treat fungal infections of the skin, hair and nails. When taken by mouth, terbinafine reaches the site of infection in concentrations strong enough to kill the fungus or stop it growing.

**When it should not be used:**

Do not use APO-TERBINAFINE if you are allergic to terbinafine (the active antifungal ingredient) or any of the ingredients in the formulation (*See What the nonmedicinal ingredients are*).

If you think you may be allergic, ask your doctor for advice.

**Do not take APO-TERBINAFINE:**

- If you have or had any liver problems.
- If you have any kidney problems.

**What the medicinal ingredient is:**

terbinafine hydrochloride

**What the important nonmedicinal ingredients are:**

Colloidal silicon dioxide, croscarmellose sodium, magnesium stearate and methylcellulose.

**What dosage forms it comes in:**

250 mg tablets

**WARNINGS AND PRECAUTIONS****Serious Warnings and Precautions**

Rarely terbinafine tablets can cause liver problems, in very rare cases the liver problems can be serious such as liver failure, some leading to death or liver transplant.

Stop taking APO-TERBINAFINE tablets and consult your doctor immediately should you develop jaundice (yellowness of skin and/or eyes). See *Table of Serious Side Effects*.

**Before you use APO-TERBINAFINE, talk to your doctor if you:**

- have or have a history of any other medical problems such as liver or kidney problems, blood diseases (e.g. anemia), serious skin reactions, or alcohol abuse
- if you have or have had liver problems, your doctor may require blood tests before and during APO-TERBINAFINE treatment to test liver function
- are allergic to any other medicines (either prescription or non-prescription) or foods
- are pregnant or intend to become pregnant while using APO-TERBINAFINE
- are breast-feeding; terbinafine is excreted in breast milk. Contact your doctor immediately, while taking APO-TERBINAFINE, if you develop conditions such as:
  - liver problems with symptoms such as persistent nausea, vomiting, abdominal pain, dark urine, pale stools, fatigue, loss of appetite, yellowing of the skin and eyes
  - serious skin reactions such as blistering or peeling skin, blistering of the lips, eye or mouth, red/inflamed skin, hives, fever (due to skin reactions), rash (due to high white blood cell count-eosinophilia)
  - experience symptoms of lupus erythematosus such as thickened patches of red/silver skin (psoriasis), joint pain, muscle disorder/pain and fever
- blood disorder with symptoms such as weakness, unusual bleeding, bruising, sore throat or frequent infections

**INTERACTIONS WITH THIS MEDICATION**

## IMPORTANT: PLEASE READ

Tell your doctor or pharmacist if you are taking or have recently taken any other medicines, including herbal medicines, oral contraceptives (birth control pills) and nonprescription medicines. Some other medicines may interact with APO-TERBINAFINE. These include:

- some medicines used to treat infectious diseases called antibiotics (e.g. rifampicin),
- some medicines used to treat mood disorders (some antidepressants (such as tricyclic antidepressants, selective serotonin reuptake inhibitors including class 1A, 1B and 1C, monoamine oxidase inhibitors Type B, desipramine),
- some medicines used to treat irregular heart rhythm (antiarrhythmics (e.g. propafenone, amiodarone),
- some medicines used to treat high blood pressure (e.g. beta-blockers such as metoprolol),
- theophylline, a medicine used to relieve bronchospasm in asthma
- some medicines used to treat cough (e.g. dextromethorphan),
- cyclosporine, a medicine used to control your body's immune system (e.g. in order to prevent rejection of transplanted organs).
- St John's wort [*Hypericum perforatum*], a herbal medicine used to treat depression

Some cases of menstrual irregularities and pregnancies have been reported in patients taking terbinafine concomitantly with oral contraceptives; however, the rate of occurrence appears to be within the background incidence for patients taking oral contraceptives alone.

### PROPER USE OF THIS MEDICATION

To help clear up your infection completely, it is very important that you keep taking this medicine for the prescribed treatment period, even if your symptoms begin to clear up or you begin to feel better after a few days. Since fungal infections may be very slow to clear up, stopping your medication too soon can cause the symptoms and the fungal infection to flare up again.

#### Missed Dose:

Try not to miss any doses. If you do miss a dose, take it as soon as possible. However, if it is almost time for your next dose (up to 4 hours), skip the missed dose and go back to your regular schedule. Do not double the doses and never make dose changes on your own. Take as prescribed by your doctor.

If any of the information in this leaflet causes you special concern or if you want additional information about your medicine and its use, contact your doctor or pharmacist. Always remember to follow your doctor's instructions and have any medical tests done that your doctor may request. Keep your appointments for follow-up visits. Remember, never share your medicines with others.

#### Usual Adult Dose

Follow your doctor's instructions carefully. Do not exceed the recommended dosage. If you have the impression that the effect of APO-TERBINAFINE is too strong or too weak, talk to your doctor or pharmacist.

Adults: 125 mg twice daily or 250 mg once daily.

Taking APO-TERBINAFINE at the same time each day will help you remember when to take your medicine. APO-TERBINAFINE tablets can be taken on an empty stomach or after a meal.

You can take APO-TERBINAFINE tablets if you are aged 65 years and over at the same dose as younger adults.

The duration of treatment varies according to the indication and the severity of infection:

TABLE 1

Indication	Duration of Treatment
Onychomycosis (of fingers and toes)	6 weeks to 3 months
Skin Infections Tinea pedis (interdigital & plantar/moccasin type)	2-6 weeks
Tinea corporis, cruris	2-4 weeks

#### Overdose:

Symptoms caused by an overdose of APO-TERBINAFINE tablets include headache, nausea, stomach pain and dizziness.

In case of drug overdose, contact a health care practitioner, hospital emergency department or regional Poison Control Centre immediately, even if there are no symptoms.

### SIDE EFFECTS AND WHAT TO DO ABOUT THEM

As with all medicines, some patients taking APO-TERBINAFINE tablets may experience some unwanted effects (side effects), although not everybody gets them.

#### The following side effects have been reported with terbinafine tablets:

Very common (*likely to affect more than 1 in every 10 patients*): headache, nausea, mild abdominal pain, stomach discomfort after meal (heartburn), diarrhea, swelling or bloating (a feeling of fullness) of the abdomen, loss of appetite, skin rashes (itchy), joint pain and muscle pain.

Common (*likely to affect 1 to 10 in every 100 patients*): Mood disorder (depression), disturbance or loss of sense of taste, dizziness, eye disorder and tiredness. If you suffer dizziness, do not drive or operate machinery.

## IMPORTANT: PLEASE READ

Uncommon (*likely to affect 1 to 10 in every 1,000 patients*): If you notice abnormal pale skin, mucosal lining or nail beds, unusual tiredness or weakness, or breathlessness on exertion (possible signs of a disease that affects the level of red blood cells), anxiety, tingling or numbness and decreased skin sensitivity, increased sensitivity of the skin to sun, noises (e.g. hissing) in ears, fever and weight loss.

Rare (*likely to affect less than 1 to 10 in every 10,000 patients*): Yellow eyes or skin (liver problems) and abnormal liver function test results.

Very rare (*likely to affect less than 1 to 10 in every 10,000 patients*): Decrease in certain types of blood cells, lupus (an autoimmune disease), serious skin reactions, allergic reactions, psoriasis-like skin eruptions (rash with silver coloured appearance), worsening of psoriasis, skin rash with flaking or peeling and hair loss.

If you experience smell, taste, visual or hearing disorders or symptoms of depression, then stop using APO-TERBINAFINE and call your doctor.

If any of the listed side effects affect you severely, discuss this with your doctor.

Other side effects not listed above may also occur in some patients. If you notice any other side effects not mentioned in this leaflet, inform your doctor or pharmacist.

Some side effects could be serious:

- if you develop fever, shivering, a sore throat or mouth ulcers due to infections and weakness or if you get infections more frequently or
- if you experience difficulty in breathing, dizziness, swelling mainly of the face and throat, flushing, crampy abdominal pain and loss of consciousness or if you experience symptoms such as joint pain, stiffness, rash, fever or swollen/enlarged lymph nodes (possible signs of severe allergic reactions).
- If you develop any skin problems such as rash, red skin, blistering of the lips, eyes or mouth, skin peeling, fever.
- if you develop any skin problems.
- If you experience severe upper stomach pain with radiation to the back (possible signs of pancreas inflammation).
- If you experience unexplained muscle weakness and pain or dark (red-brown) urine (possible signs of muscle necrosis).

<b>SERIOUS SIDE EFFECTS, HOW OFTEN THEY HAPPEN AND WHAT TO DO ABOUT THEM</b>				
Symptom / effect		Talk with your doctor or pharmacist		Stop taking drug and call your doctor or pharmacist
		Only if severe	In all cases	
<b>Rare</b>	Liver problems, sometimes fatal with symptoms such as persistent nausea and vomiting, abdominal pain, fatigue, loss of appetite, dark urine, pale stools or jaundice (yellowing of the skin and eyes).			√
<b>Very rare</b>	Blood abnormalities with symptoms of sore throat, fever, mouth sore, unusual bleeding or bruising.			√
	Inflammation of the blood vessels (vasculitis) or the pancreas (pancreatitis)			√
	Serious allergic reactions (anaphylactic or serum sickness reactions) or infections			√
	Muscle breakdown (rhabdomyolysis)			√
	Immune system disorders (lupus)			√
	Serious skin reactions (blistering, peeling skin)			√

*This is not a complete list of side effects. For any unexpected effects while taking APO-TERBINAFINE, contact your doctor or pharmacist.*

### HOW TO STORE IT

Store at temperatures between 15° and 30°C.

Protect from light.

Keep out of reach of children.

## IMPORTANT: PLEASE READ

### REPORTING SUSPECTED SIDE EFFECTS

You can report any suspected adverse reactions associated with the use of health products to the Canada Vigilance Program by one of the following 3 ways:

- Report online at [www.healthcanada.gc.ca/medeffect](http://www.healthcanada.gc.ca/medeffect)
- Call toll-free at 1-866-234-2345
- Complete a Canada Vigilance Reporting Form and:
  - Fax toll-free to 1-866-678-6789, or
  - Mail to : Canada Vigilance Program  
Health Canada  
Address Locator: 0701E  
Ottawa, ON K1A 0K9

Postage paid labels, Canada Vigilance Reporting Form and the adverse reaction reporting guidelines are available on the MedEffect™ Canada Web site at [www.healthcanada.gc.ca/medeffect](http://www.healthcanada.gc.ca/medeffect).

*NOTE: Should you require information related to the management of side effects, contact your health professional. The Canada Vigilance Program does not provide medical advice.*

### **MORE INFORMATION**

For more information, please contact your doctor, pharmacist or other healthcare professional.

This leaflet plus the full product monograph, prepared for health professionals, can be obtained by contacting DISpedia, Apotex's Drug Information Service at:

1-800-667-4708

This leaflet can also be found at:  
<http://www.apotex.ca/products>.

This leaflet was prepared by Apotex Inc., Toronto, Ontario, M9L 1T9.

Last revised: October 29, 2013